

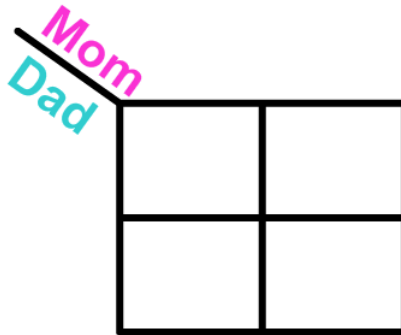
## Furry Family

### Directions:

1. Go to [www.jonathansclassroom.com/furry-family.html](http://www.jonathansclassroom.com/furry-family.html)
2. Click on the *Furry Family* picture
3. Click *PLAY*
4. Click *VIEW TUTORIAL*
5. Read through the TUTORIAL and answer the following questions.

### Questions:

1. What are the two traits that exist, and what types of letters represent each trait?
2. Complete the Punnett Square within the tutorial.



3. In the Punnett Square, what happens when a capital F is in a box?
4. What happens when 2 lower-case f's are present inside a box?

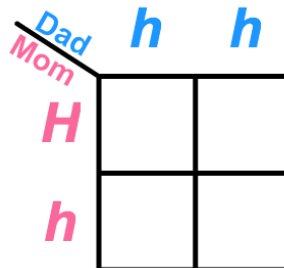
### Directions:

1. Click *START*
2. Answer the questions below as you move through the game.

### Questions:

1. What *genotype* and *phenotype* allows for the bunny to camouflage?
  - a. Genotype –
  - b. Phenotype –

2. Complete the Punnett Square to the right:



3. What are the chances the baby bunny will have a round-shaped head? A slim-shaped head?
  - a. Round Shaped Head –
  - b. Slim Shaped Head –